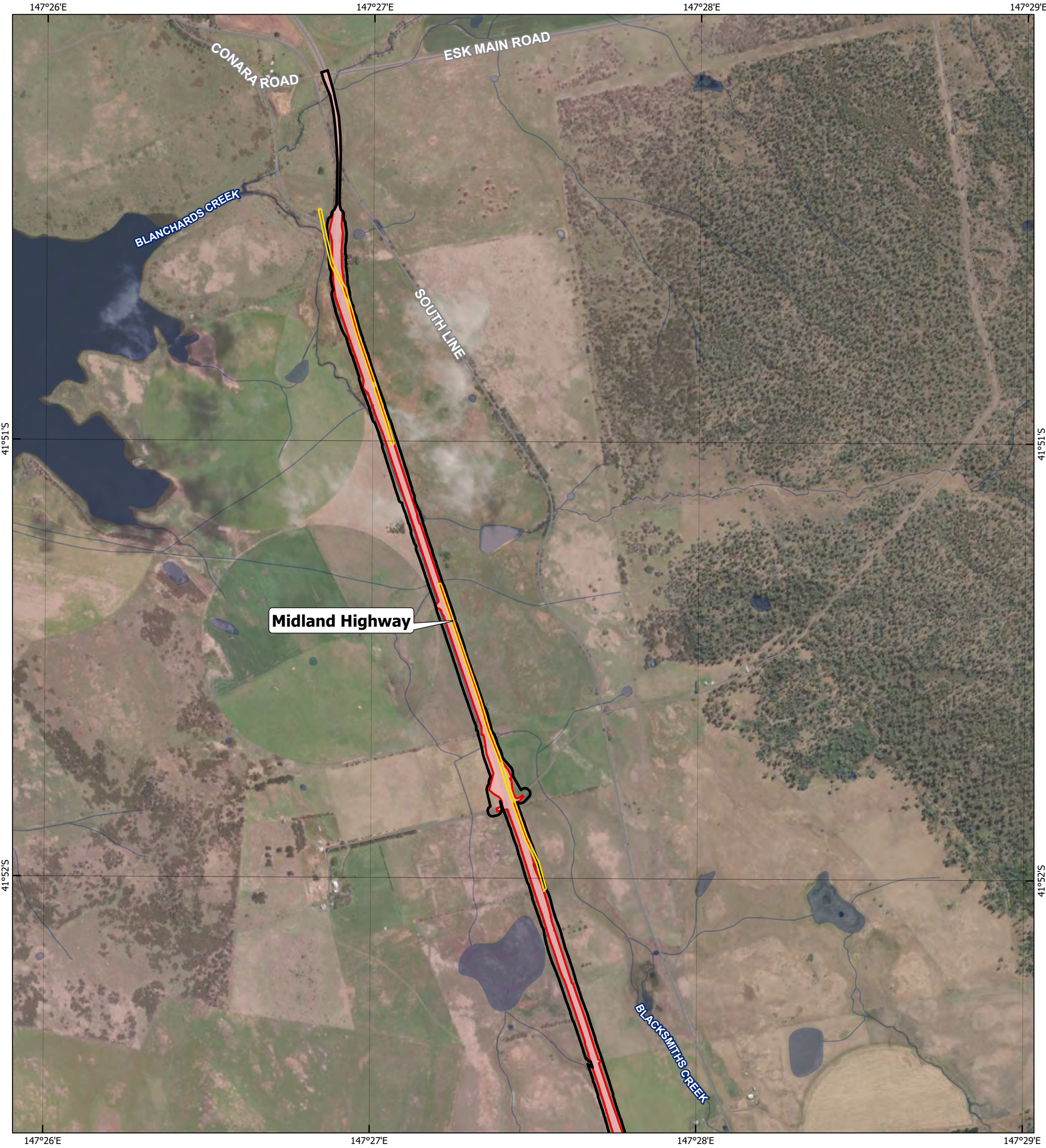


Preliminary Documentation Package

Midland Highway Upgrade – Campbell Town North Portion B (2022/09424)

Construction Footprint Maps



LEGEND

Project area

Disturbance area - construction Footprint

Disturbance area – electrical easements

Road

Waterway

Waterbody

LAUNCESTON

PERTH

CAMPBELL TOWN

N

A3

1:16,000

GDA2020 MGA Zone 55

0

0.5

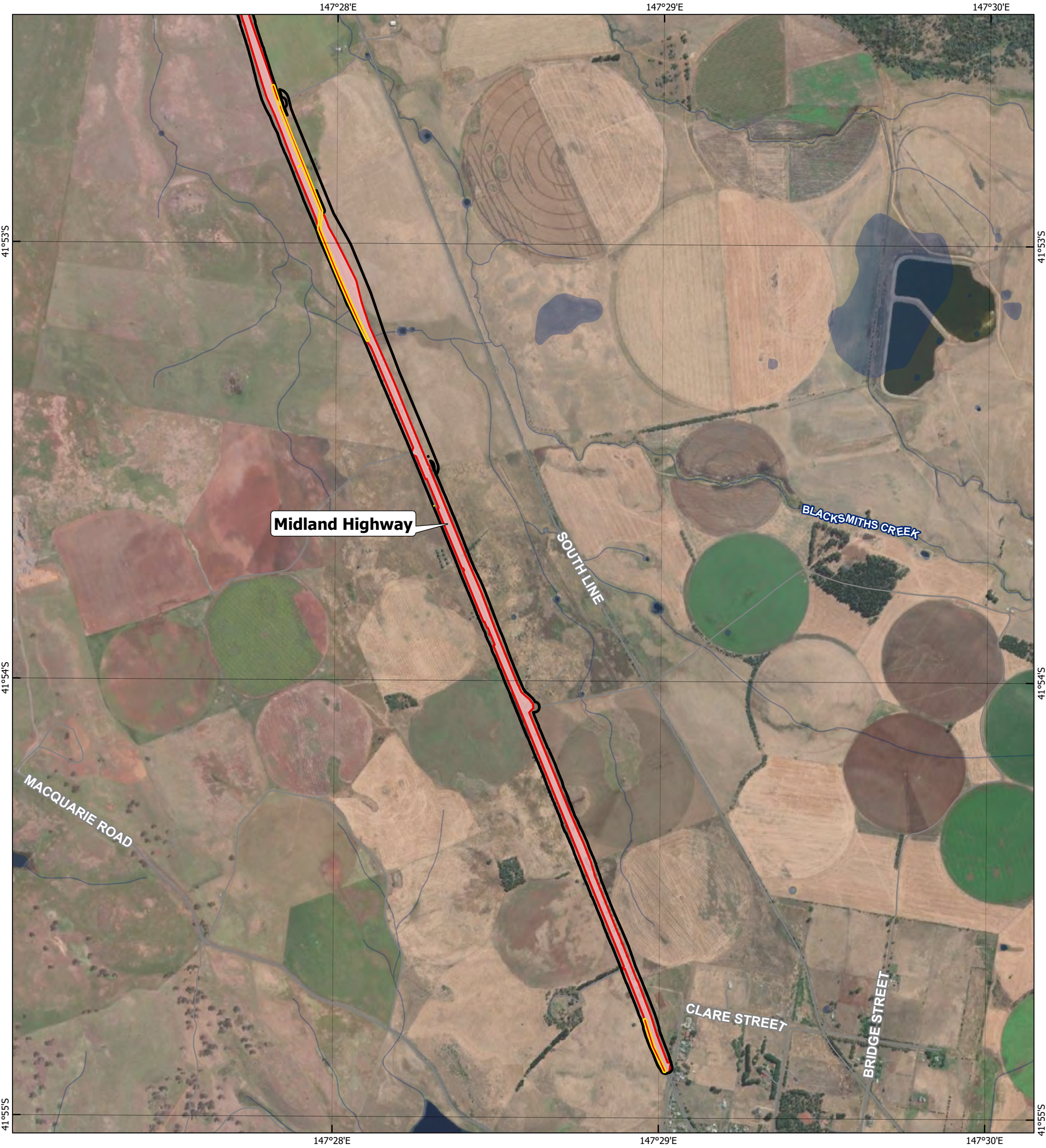
1

Kilometres

This document has been prepared by Jacobs Group (Australia) Pty Ltd ("Jacobs") under a contract with its client. Copyright vests in Jacobs and/or its client and permission must be sought prior to use or copying for commercial purposes. Jacobs and/or its client accept no responsibility or liability to any third party for errors in this document.

Data Sources: Geosciences Australia (2006); Jacobs 2018-2025
Imagery Sources: ESRI Online Imagery Services

\\ausyd0vs01\GISWork\TAS_IA250227_MidlandHighway\Geospatial\Apps\ArcPro\Figures\Ecology\IA250227_RFI.aprx | Date: 1/28/2025



LEGEND

Project area

Disturbance area - construction Footprint

Disturbance area – electrical easements

Road

Waterway

Waterbody

LAUNCESTON

PERTH

CAMPBELL TOWN

N

0

0.5

1

Kilometres

A3

1:16,000

GDA2020 MGA Zone 55

Jacobs

This document has been prepared by Jacobs Group (Australia) Pty Ltd ("Jacobs") under a contract with its client. Copyright vests in Jacobs and/or its client and permission must be sought prior to use or copying for commercial purposes. Jacobs and/or its client accept no responsibility or liability to any third party for errors in this document.

Data Sources: Geosciences Australia (2006); Jacobs 2018-2025
Imagery Sources: ESRI Online Imagery Services

\\ausyd0vs01\GISWork\TAS_IA250227_MidlandHighway\Geospatial\Apps\ArcPro\Figures\Ecology\IA250227_RFI.aprx | Date: 1/28/2025