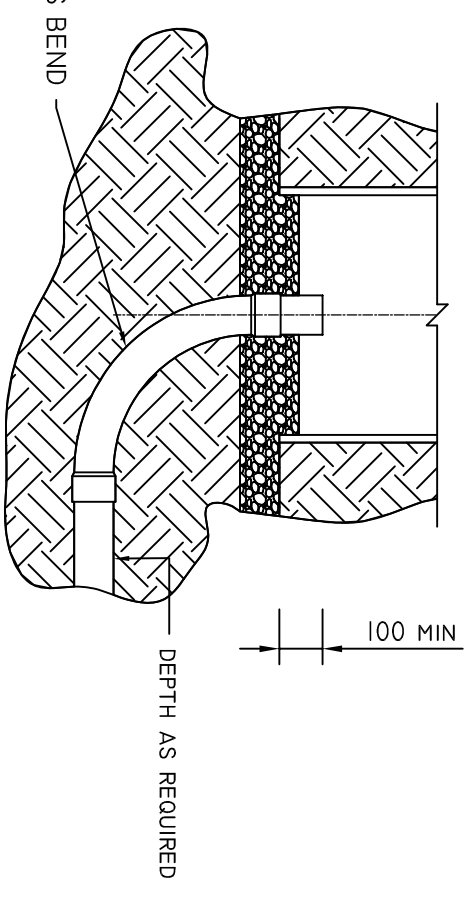
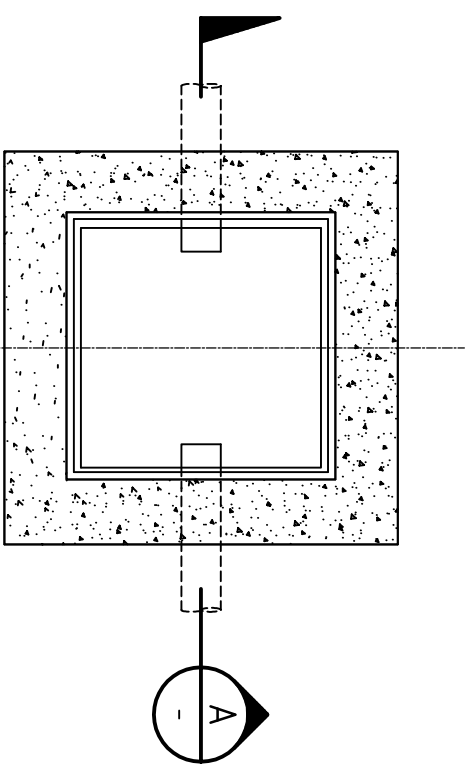


- COVER & FRAME DRAWING SD 101 022
- FORMED CONCRETE, MAY FINISH 50MM BELOW GROUND LEVEL FOR PAVING OR ASPHALT
- SELECTED BACKFILL (COMPACTED)
- SIDE ENTRY CONDUIT TO BE ALIGNED TO EASE CABLE RUNS. DEPTH OF COVER TO BE 500 MIN & 700 MAX
- CONDUIT ENTRY HOLES TO BE CUT ACCURATELY WITH HOLE-SAW TO PROVIDE A SLIDING FIT ALTERNATIVELY, SHOULD BE STOPPED & SEALED WITH CEMENT MORTAR
- BASE OF CLASS 3, 20MM COMPACTED CRUSHED ROCK



STANDARD SIDE ENTRY CONDUIT
SCALE : 1:20

BASE ENTRY CONDUIT
SCALE : 1:20

THIS DRAWING SUPERSEDES NO. 854042 (IN PART)

- NOTE:**
1. AVOID DISTORTION DURING COMPACTION SUCH THAT THE MINIMUM DIAMETRIC DIMENSION EXCEEDS 580.
 2. ENDS OF CONDUITS TO BE TRIMMED NEATLY & FREE FROM SHARP EDGES OR BURRS.
 3. ADEQUATE DRAINAGE TO AN APPROVED OUTLET SHALL BE PROVIDED.
 4. BASE ENTRY TO BE USED ONLY WHERE DEEP CONDUIT RUNS ARE REQUIRED.
- MATERIALS REQUIRED PER PIT.**
- CABLE PIT FORMER
 - ACCESS COVER AND FRAME, WITH COVER SUITABLY INSCRIBED AS PER SPECIFICATION.
 - HEAVY DUTY ORANGE OR WHITE CONDUIT AS REQUIRED.
 - CONDUIT JOINTING CEMENT, CRUSHED ROCK, CONCRETE, MORTAR ETC AS REQUIRED.

REINFORCEMENT RINGS REMOVED	B.V	14/07/2022	DRAWN	B. VINEY
UPDATE TO STANDARD DRAWING	B.V	10/12/2020	REVIEWED	N. HARREX
APPROVED				
ISSUE	DETAILS	DRN	DATE	



DEPARTMENT OF STATE GROWTH
STANDARD DRAWING
CABLE PIT INSTALLATION DETAILS
DRAWING ADAPTED FROM VICROADS STANDARD DRAWING TC-1230

DO NOT SCALE	REVISION NUMBER
USE OF THIS DRAWING IS GOVERNED BY THE CONDITIONS ON THE DEPARTMENT STATE GROWTH WEBSITE. IT IS THE USERS RESPONSIBILITY TO ENSURE IT IS THE CURRENT REVISION.	C
STANDARD DRAWING NUMBER	
SD-101-021	