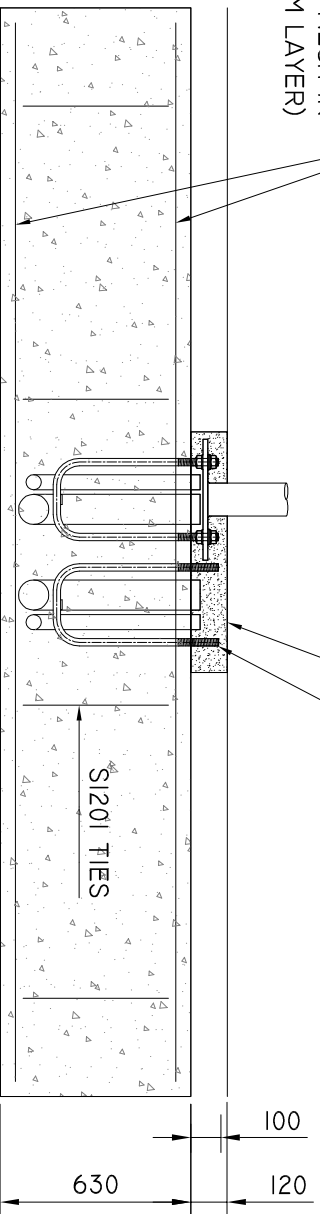


F 1018 MESH (10MM BARS PARALLEL TO LONG SIDE DO NOT SPLICE MESH IN BOTTOM LAYER)

PACK WITH 3:1 SAND CEMENT MORTAR
SLEEVE SPARE RAG BOLTS INDICATE LOCATION OF BOLTS ON FINISHED SURFACE BLOCK UNUSED CONDUITS WITH REMOVABLE MATERIAL

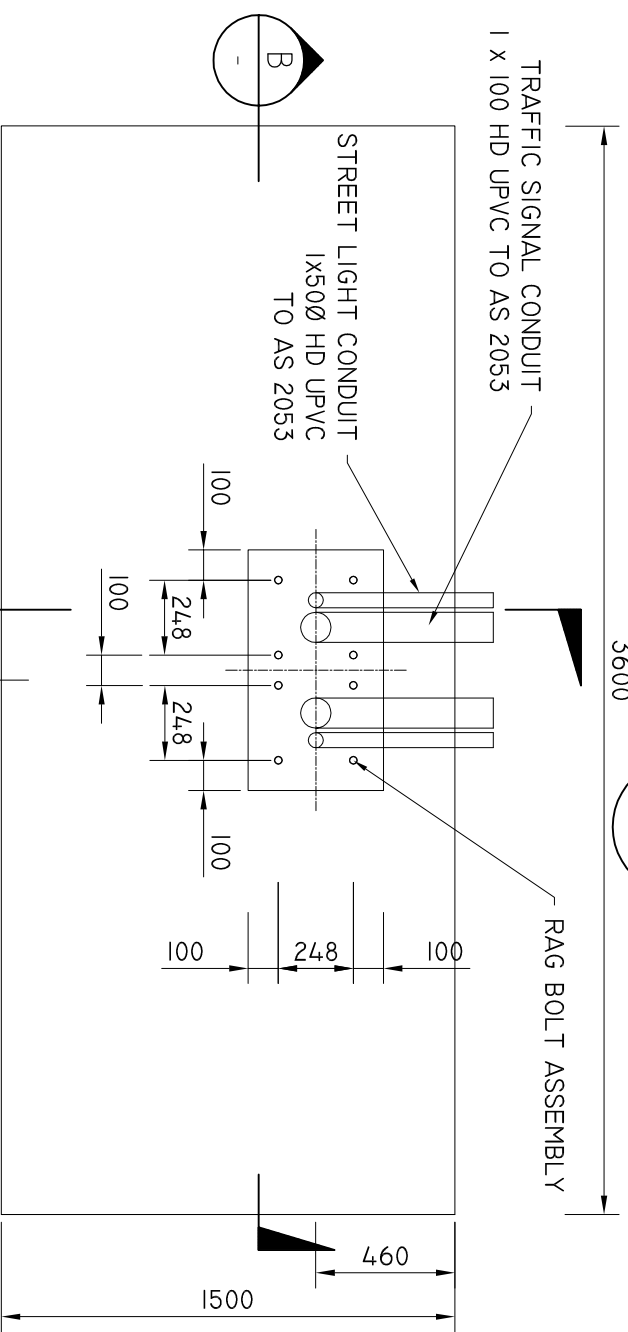


SECTION
NTS
3600

TRAFFIC SIGNAL CONDUIT
1 X 100 HD UPVC TO AS 2053

STREET LIGHT CONDUIT
1X50Ø HD UPVC
TO AS 2053

RAG BOLT ASSEMBLY

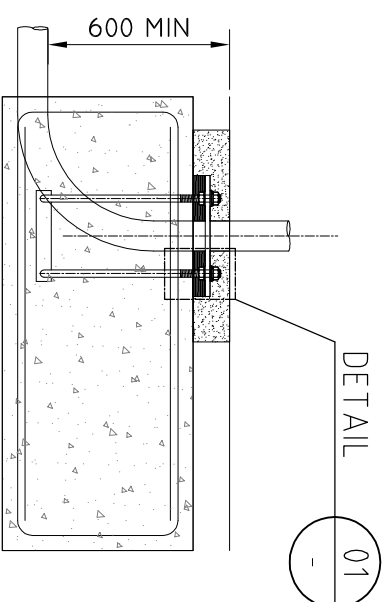


DIRECTION OF MAST ARM AND/OR
STREET LIGHTING BRACKET

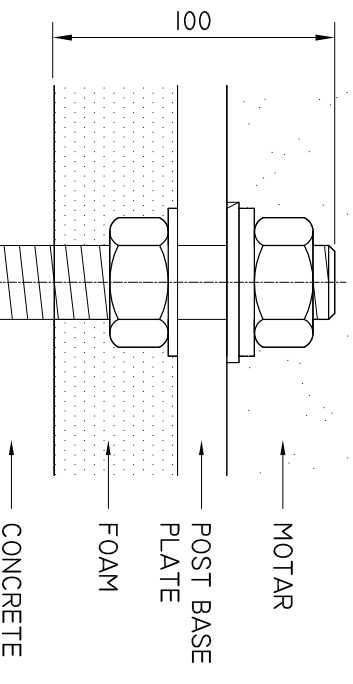
PLAN

- NOTES:
1. FOUNDATION
 - 1.1. THIS FOUNDATION IS SUITABLE FOR ALL SOIL TYPES AND ALL JOINT USE POLES AND MAST ARM TYPES.
 - 1.2. ALL EXCAVATION SHALL BE FREE FROM LOOSE MATERIAL OR WATER AT THE TIME OF PLACING THE CONCRETE.

2. CONCRETE
 - 2.1. CONCRETE STRENGTH GRADE SHALL BE N32 TO THE REQUIREMENTS OF AS 1379 SPECIFIED SUPPLY OF CONCRETE.
 - 2.2. EXPOSED EDGES OF FOOTING SHALL HAVE 25X25MM FILLETS OR CHAMFERS.
 - 2.3. CLEAR COVER TO REINFORCEMENT SHALL NOT BE LESS THAN 50MM.
 - 2.4. CALCULATED VOLUME OF CONCRETE IS 35M³
 - 2.5. CONCRETE MUST BE VIBRATED WHEN PLACED.
3. REINFORCEMENT GRADE
 - 3.1. STRUCTURAL REINFORCEMENT : 12MM DIA AS 1302 GRADE 250 S.
 - 3.2. MESH SHALL BE TO AS 1304.
4. RAG BOLTS
 - 4.1. ALL BOLTS TO BE HIGH STRENGTH STEEL.
 - 4.2. HIGH STRENGTH BOLTS (24MM DIA) WITH ALL ASSOCIATED NUTS AND WASHERS.
 - 4.3. ALL BOLTS TO BE GALVANISED.
 - 4.4. REFER TO SD 101 002 FOR RAG BOLT ASSEMBLY.



SECTION
NTS
A



DETAIL
NTS
DETAIL FROM
DRAWING - SD 101 002

REINFORCEMENT SCHEDULE - SPREAD FOOTING

| BAR MARK | GRADE | DIAMETER | SHAPE | NO. |
|----------|------------|----------|-------------|----------|
| S1201 | STRUCTURAL | 12 | 1300 495 | 4 |
| F1018 | | 34.00 | 1300 | 2 SHEETS |

DEPARTMENT OF STATE GROWTH

STANDARD DRAWING
SPREAD FOOTING
DRAWING ADAPTED FROM VICROADS STANDARD DRAWING TC-1202

DO NOT SCALE
USE OF THIS DRAWING IS GOVERNED BY THE CONDITIONS ON THE
DEPARTMENT STATE GROWTH WEBSITE.
IT IS THE USERS RESPONSIBILITY TO ENSURE IT IS THE CURRENT REVISION.
STANDARD DRAWING NUMBER
SD-101-015

REVISION NUMBER
B



| | | | | | | |
|-------|-----------------------------|-----|------------|-----------|----------|------|
| ISSUE | DETAILS | DRN | DATE | APPROVED | REVIEWED | DATE |
| A | DETAILS | DRN | DATE | APPROVED | REVIEWED | DATE |
| B | UPDATES TO STANDARD DRAWING | B.V | 18/02/2021 | N. HARREX | | |
| H | UPDATE TO STANDARD DRAWING | | | | | |

0 10 20 30 40 50 60 70 80 90 100

6 7 8 9 10