

TYPICAL LAYOUT - AUL(S)

OPERATING SPEED	NUMBER OF ARROWS	DIMENSION A (Arrow Spacing)	DIMENSION B (CC Line)	DIMENSION C (C Line)
50 km/h	1	N/A	Nom. 9 m	Nom. 15 m
60 km/h	1	N/A	Nom. 12 m	Nom. 20 m
70 km/h	1	N/A	Nom. 15 m	Nom. 25 m
80 km/h	Not generally applicable in urban areas Use values shown in table on Standard Drawing SD-84.017			
90 km/h				
100 km/h				
110 km/h				
Refer Note 3 for additional details regarding the above dimensions				

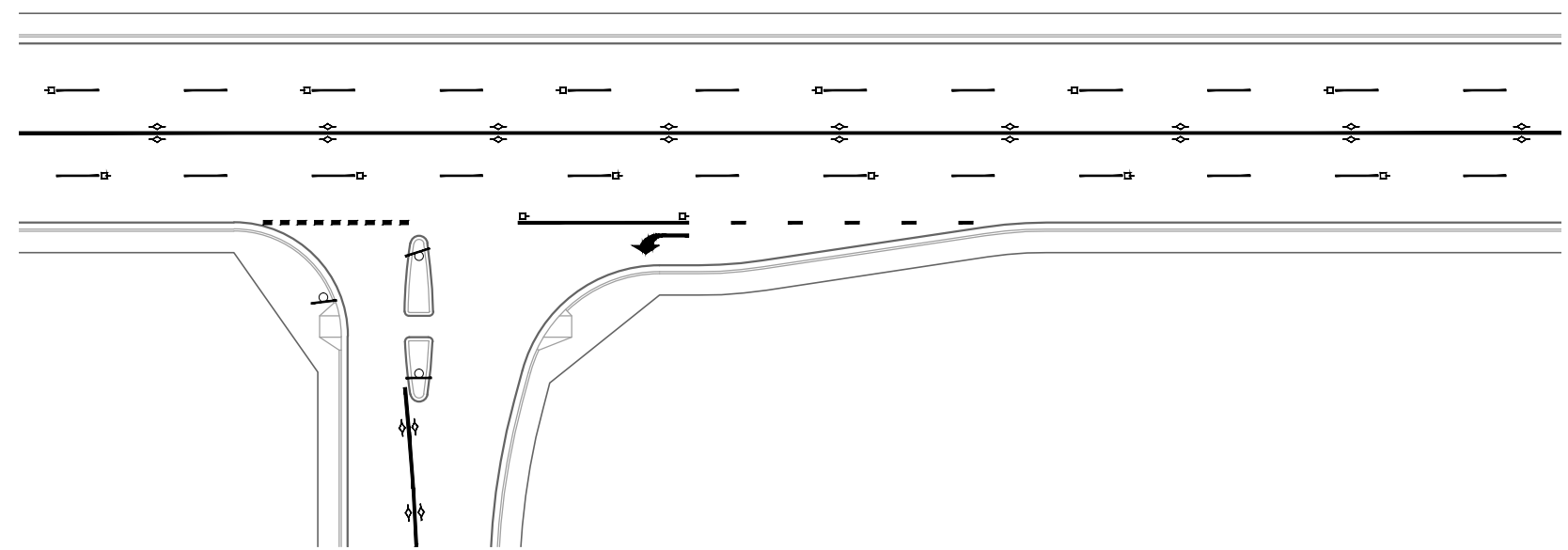


FIGURE 84.7.1

NOTES

- The warrants regarding the use of this type of facility and its required dimensions shall be in accordance with Austroads Guide to Road Design Part 4A: Unsignalised and Signalised Intersections.
- Centre line is shown indicatively as separation line. Actual line type will vary according to site specific conditions.
- The values in Table 84.7.1 are provided as a guide for new facilities. Where possible, following resealing work, existing facilities should be reinstated as per the table. However it is recognised that in many locations, existing dimensions may not necessarily relate to current guidelines and that adjustment of continuity lines and arrow spacing will be required to suit on-site conditions.

REFERENCE DRAWINGS

- SD-81.001 - Standard Line Types and Codes
- SD-81.002 - Raised Pavement Markers
- SD-84.001 - Urban Junction Without Traffic Island - Typical Arrangement
- SD-84.002 - Urban Junction With Traffic Island - Typical Arrangement

DRAWING: DIER Standard Drawings - Traffic Facilities.dwg

No.	Amendment Description	Initials	Date
A3 Original	This sheet may be prepared using colour and may be incomplete if copied		

DRAWN	DATE
G. HILLS	19 JUL 2013
REVIEWED	DATE
D. HOWATSON	22 JUL 2013
APPROVED	DATE
R. BURK	22 JUL 2013
Manager Traffic Engineering	



Infrastructure, Energy and Resources

STANDARD DRAWING
TRAFFIC FACILITIES
INTERSECTIONS & INTERCHANGES
Urban Auxiliary Short Lane Left Turn Facility - AUL(S)
Typical Arrangement

DO NOT SCALE	
Use of this drawing is governed by the conditions outlined on the DIER website. It is the users responsibility to ensure it is the current revision.	
STANDARD DRAWING NUMBER	REVISION NUMBER
SD-84.007	00