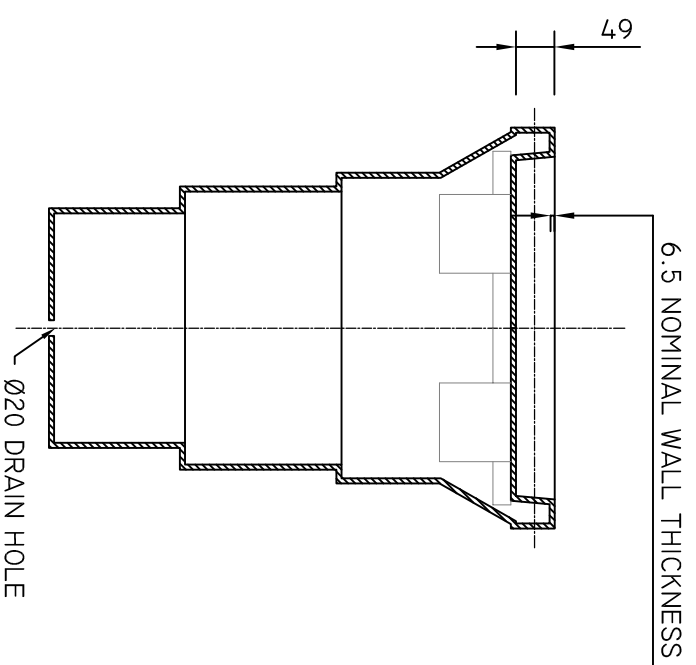
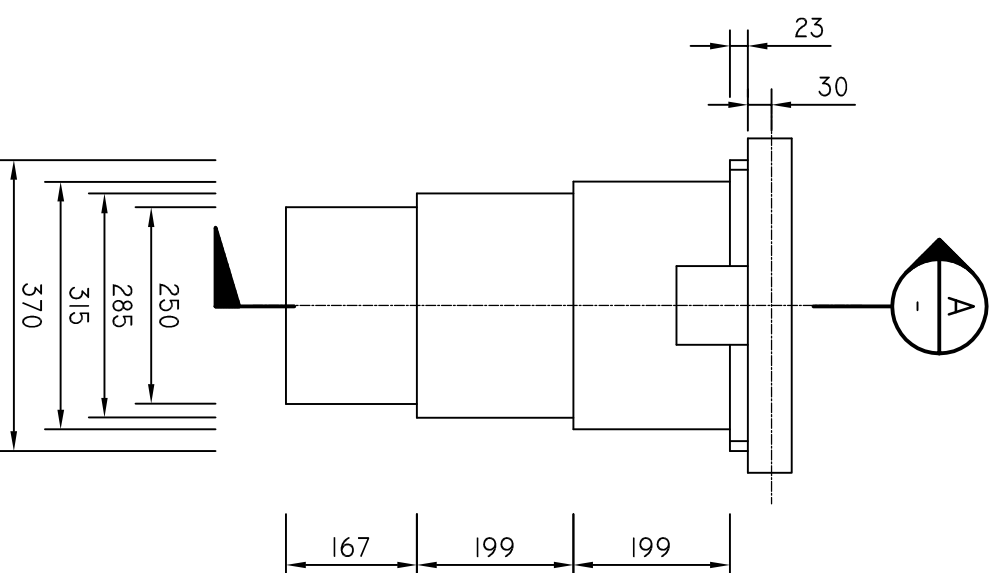
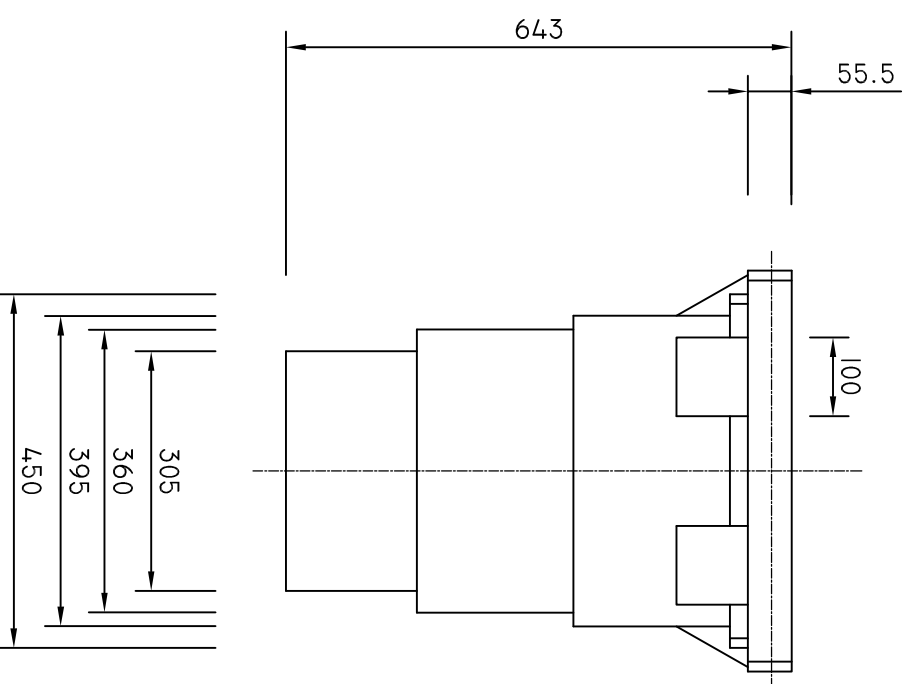
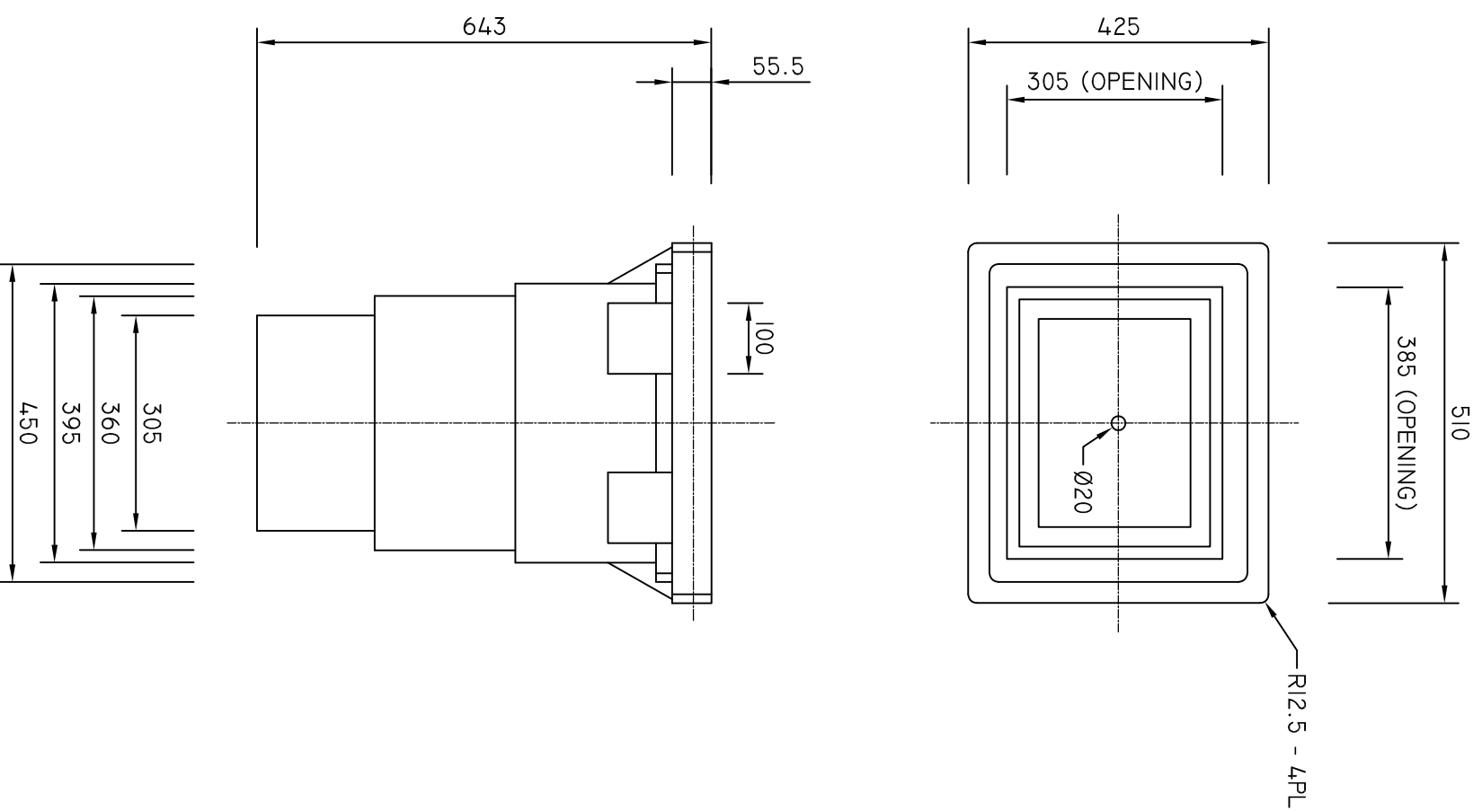
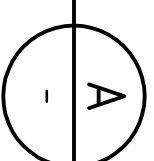


- NOTES**
1. DIMENSIONS ARE IN MILLIMETRES UNLESS OTHERWISE NOTED.
 2. MATERIAL HDPE OR AS SPECIFIED.
 3. ALL JOINTS FULLY SEAM WELDED TO COMPLY WITH RELEVANT STANDARDS.
 4. FOR DETAILS OF CABLE PIT COVERS SEE DRAWING SD-101-022.
 5. THIS PIT TYPE IS ONLY USED FOR EXISTING REMEDIATION WORKS.



SECTION
1:10



DRAWN		B. VINEY	
REVIEWED		N. HARREX	
ISSUE		DATE	
A	13/07/2022	DRN	BV
DETAILS		APPROVED	



DEPARTMENT OF STATE GROWTH
STANDARD DRAWING
SMALL PIT DETAILS

DO NOT SCALE
USE OF THIS DRAWING IS GOVERNED BY THE CONDITIONS ON THE DEPARTMENT STATE GROWTH WEBSITE. IT IS THE USERS RESPONSIBILITY TO ENSURE IT IS THE CURRENT REVISION.
STANDARD DRAWING NUMBER
SD-101-029

REVISION NUMBER
A

