

Hobart Southern Projects

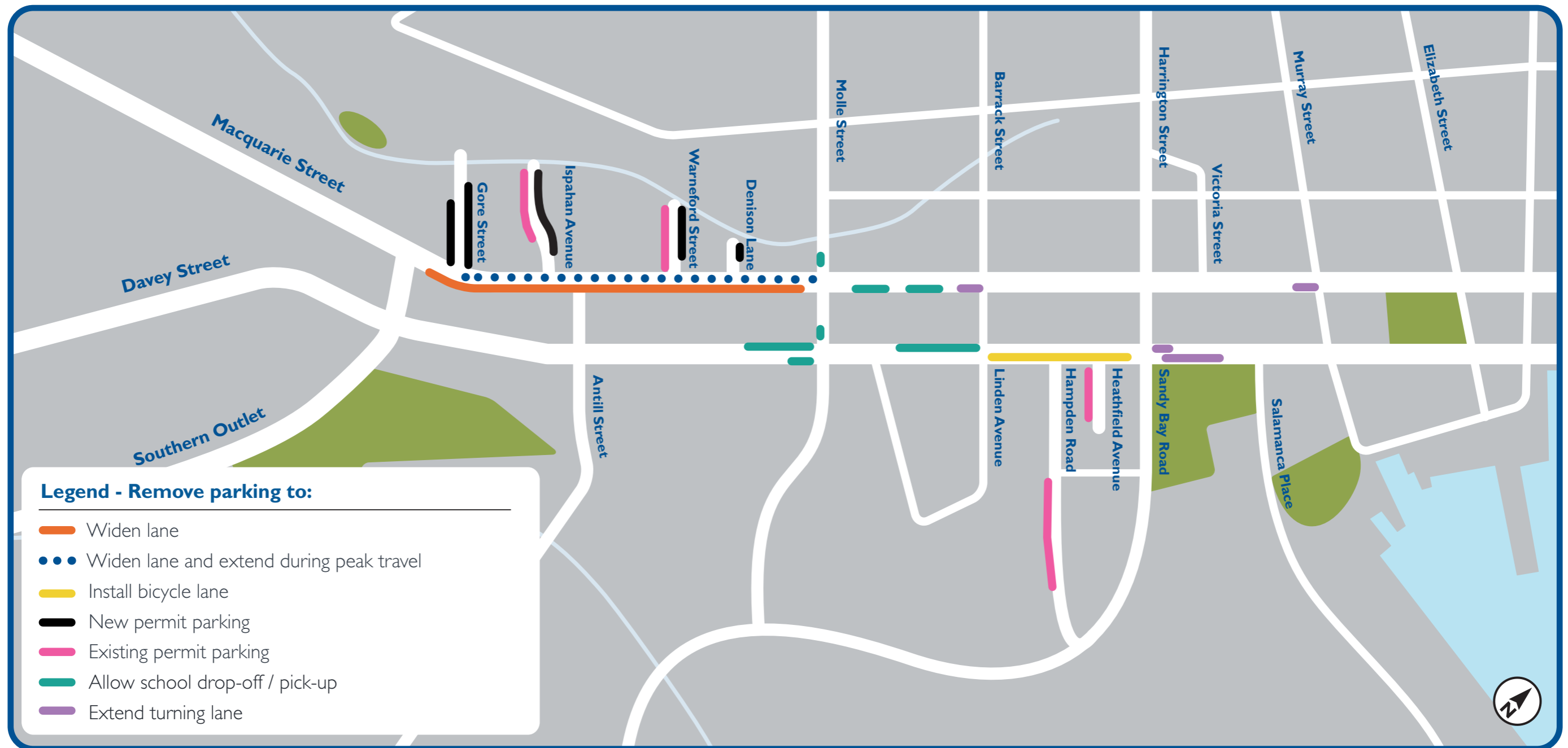
Macquarie and Davey Street Bus Improvements



¹ A bicycle box is a designated area at the head of a traffic lane at a signalised intersection that allows cyclists to move ahead of traffic, improving safety and visibility.

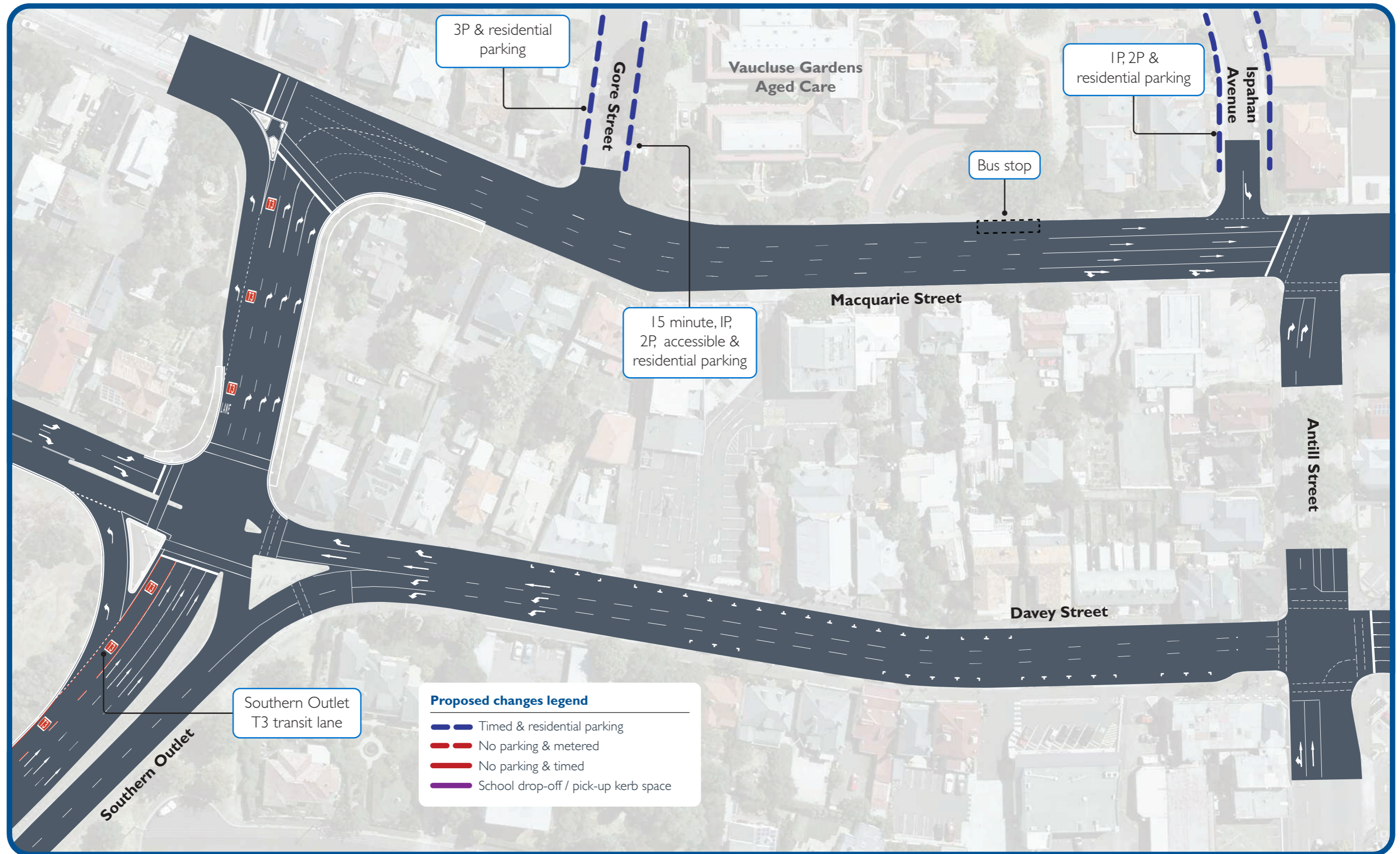
Hobart Southern Projects

Macquarie and Davey Street Bus Improvements



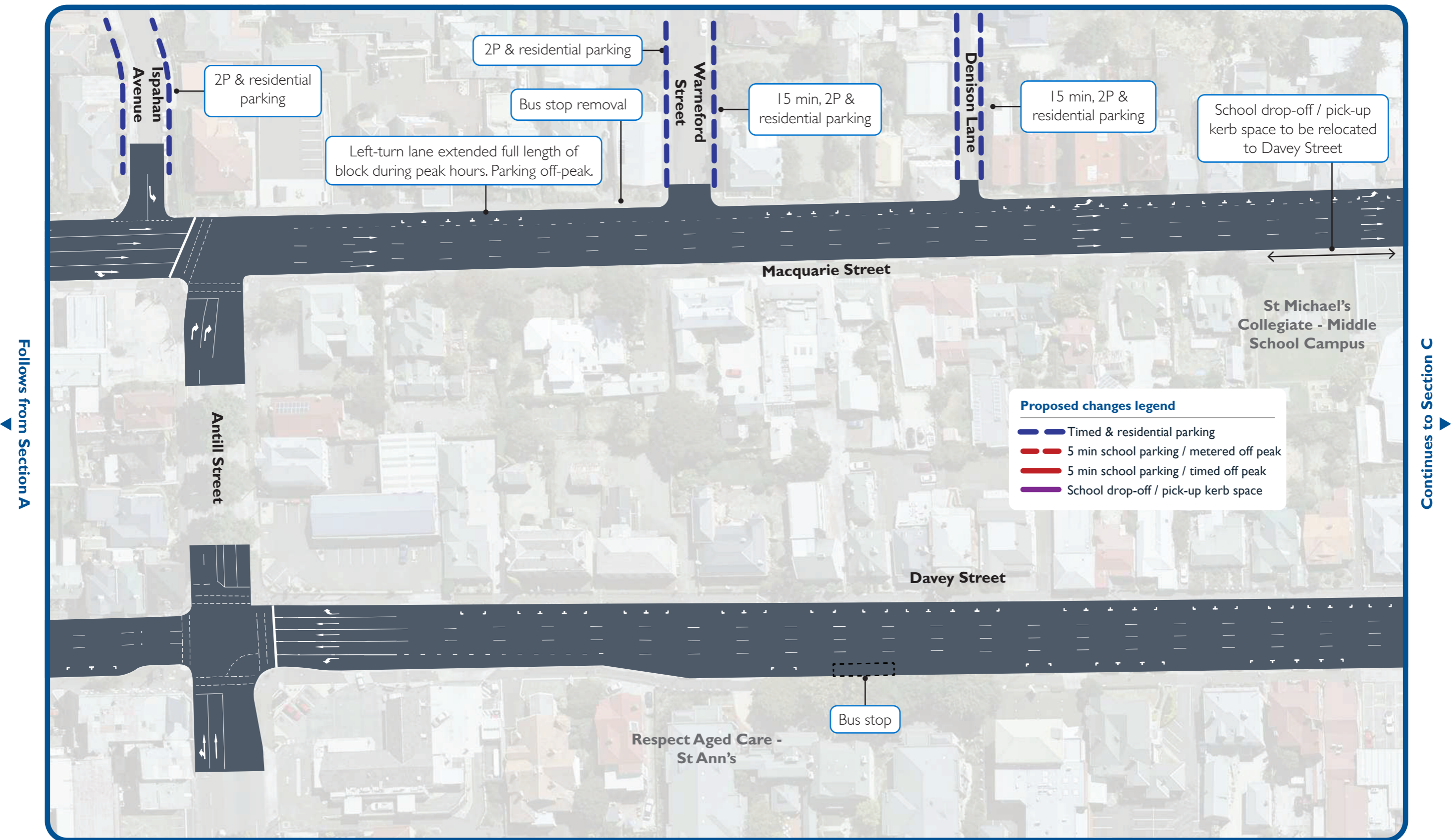
Hobart Southern Projects

Macquarie and Davey Street Bus Improvements



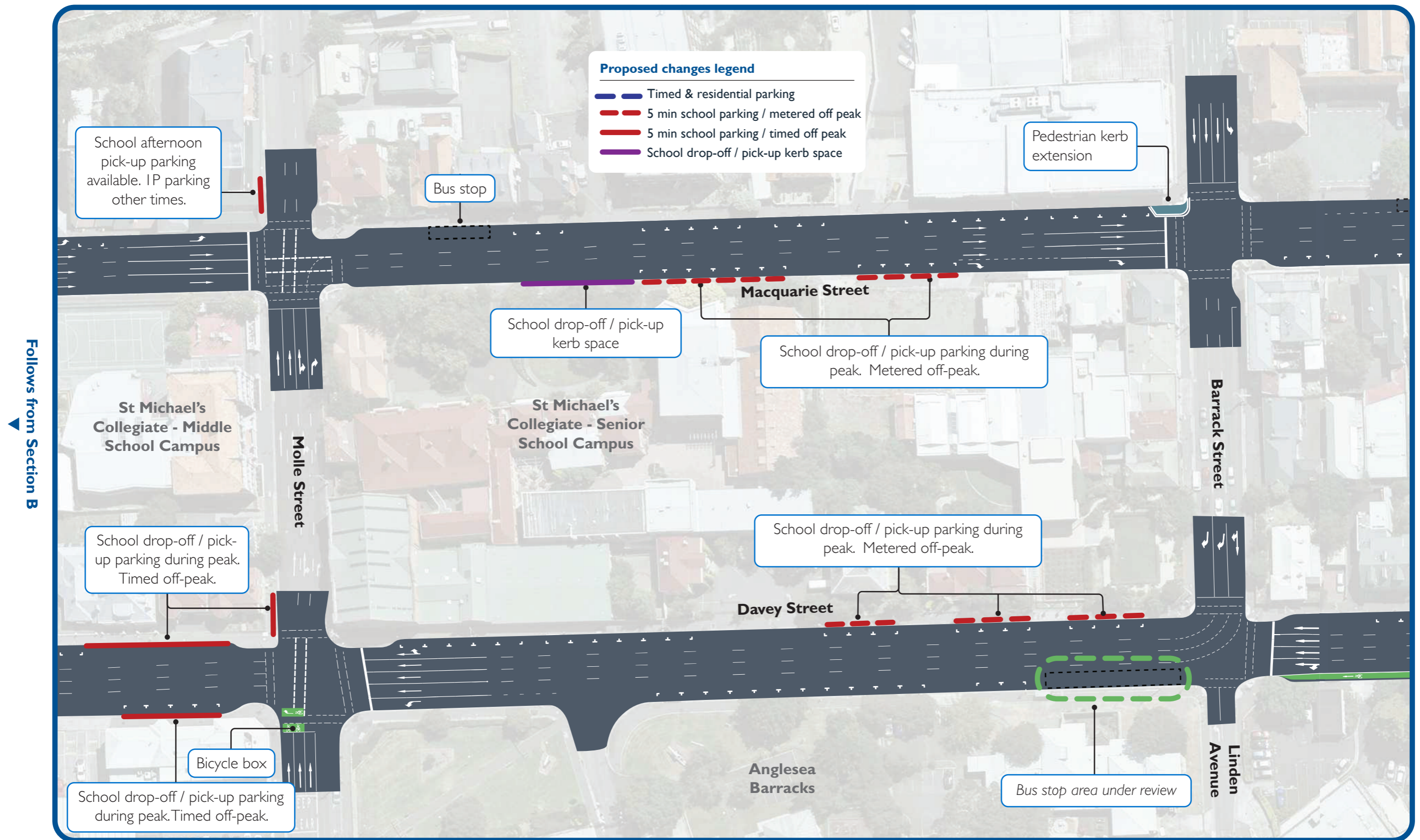
Hobart Southern Projects

Macquarie and Davey Street Bus Improvements



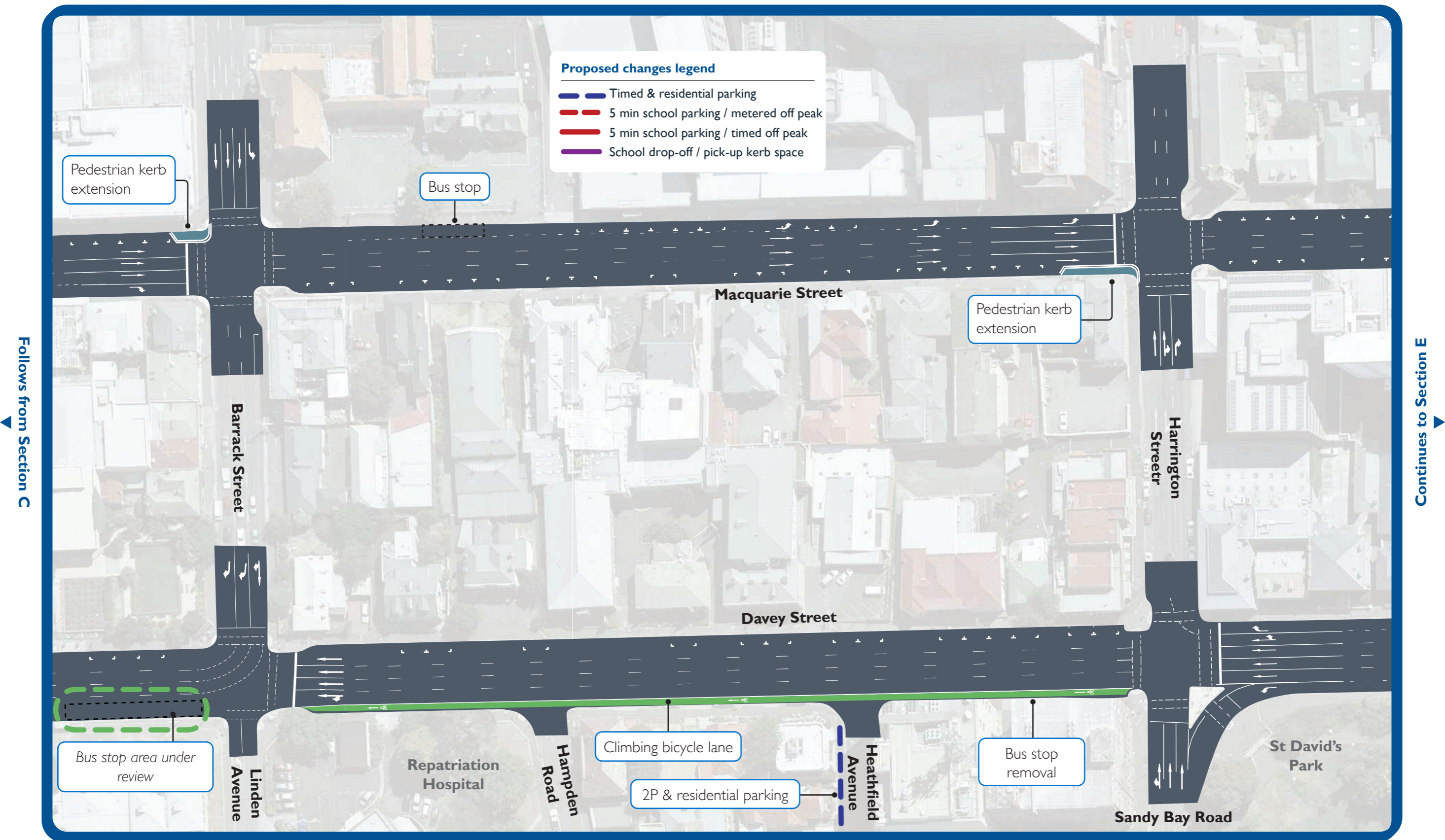
Hobart Southern Projects

Macquarie and Davey Street Bus Improvements



Hobart Southern Projects

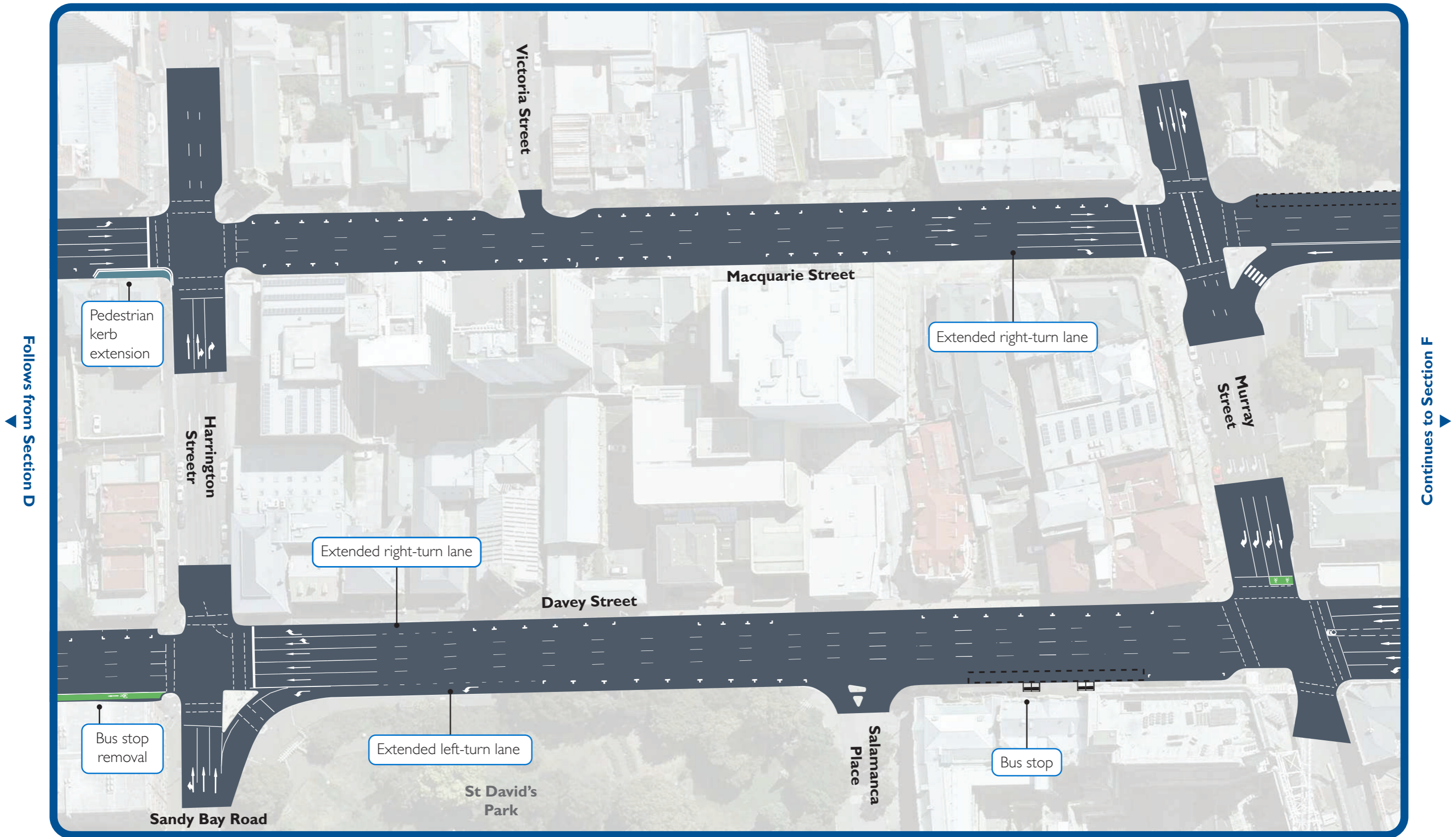
Macquarie and Davey Street Bus Improvements



Hobart Southern Projects

Macquarie and Davey Street Bus Improvements

Harrington Street / Sandy Bay Road - Murray Street



Hobart Southern Projects

Concept Design – Macquarie Street and Davey Street Bus Priority

Murray Street - Elizabeth Street

